



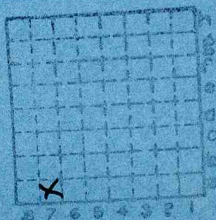
Form 180 Blue

57' to 4'6" of #6 coal

L. F. Brandt C. C.

L-1

151



Sec. 29

T. 16 N. 3

R. 6 E. 3

Index No.

Mine Index 2032



Mine originally operated by: (1)

L.F. Brandt Coal Co.

Date

1936 L-1

Original name or number:

Illinois Coal Report 1936 p.

LATER OPERATORS

Date

Operator

Name or No.

- 2
- 3
- 4
- 5
- 6
- 7
- 8
- 9
- 10
- 11
- 12
- 13
- 14

1941, 1942

* Also owners

#See ownership sheet

Railroad, Wagon, Idle, Abandoned

Shaft Mine

IDENTIFICATION

L-1

County No.

M1
2032

Coal No. 6

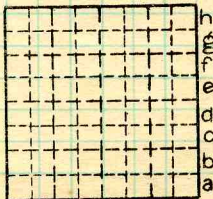
L.1



Quad. Annawan

Part

County Bureau



Sec. 29

16 N.

T. 4.

R. 6 E.

W.

Index No.

1829A7

COAL MINE OPERATOR



(Sheets) COAL PRODUCTION (Sheet)

Period				Tons		
Mo.	Day	Year	Mo.	Day	Year	
		1937				2 800 Local
		1938				2 700
		1939				2 400
		1940				2 346
		1941				2 700
		1942				1 100
		1943				320

SUMMARIES

No.	to	No.	
1937		1943	14 366

Railroad, Wagon, Strip, Idle, Abandoned

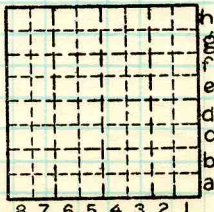
IDENTIFICATION

County No. _____ Coal No. _____

Coal Report No. L-1

Quad.

County Bureau



Sec. 29

T. 16 N.

R. 6 E.

Index No.

COAL MINE—PRODUCTION

ILLINOIS GEOLOGICAL SURVEY, URBANA