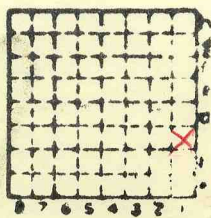


ISGS Index No. 4040

Ingram CC

485.



Sec. 23

T. 9 ~~11~~
S.

R. 2 ~~1~~
E.

Index No.

✓



Mine originally operated by: (1)

Ingram Coal Co.

Date 1909

Original name or number:

Illinois Coal Report

p.

LATER OPERATORS

Date	Operator	Name or No.
2 1906	8,589 tons	
3 1907	3,226 tons	
4 1908	1,248 tons	
5 1909	1,250 tons	
6	<u>14,313 tons</u>	
7		
8		
9		
10		
11		
12		
13		
14		

#4 Coal?

* Also owners

#See ownership sheet

Railroad, Wagon, Idle, Abandoned

LOCAL MINE IDENTIFICATION

County No. 485

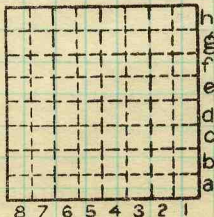
Coal No.



Part

Quad. Marion

County Williamson



Sec. 23

T. 9 S.

R. 2 E. W.

Index No.

0623 cl

COAL MINE OPERATOR



LOCATION AND ELEVATION

Location: side R. R. side R. R. side Highway No.

on top. map Location sheet

Elevation: Method, 1. Est. () ft. 2. Inst. (kind Hand Level) 430 ft.

By G.H.C. NB 96 p.70,71 Data sheet

DEPTH

Authority To coal Authority Rail to rail Top of coal above rail. (Est. Rule) To coal

444.0 by W. S. M. K. S. Engr. 121 ft. 310 ft.

ALTITUDE OF TOP OF COAL

By estimated data By instrumental data

Thickness

Max. in. Min. in. Aver. 48 in.

GEOLOGICAL DATA

Mine notes, date Coop No. Pyr. inv. Coal Ash inv.

CHEMICAL DATA

Table with 4 columns: Analyzes Face, U. I., B. M., Others. Rows include Car, Org. Sulf, Ash fusion, Ash anal.

Classification

Misc. tests: Coking. Cleaning Boiler

Published descriptions:—

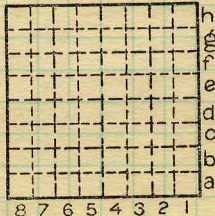
Railroad, Wagon, Idle, Abandoned

IDENTIFICATION

County No. 485

Coal No. □ Part

Quad. Marion County Williamson



Sec. 23

T. 9 N. S. R. 2 E. W.

Index No.

0623 01

COAL MINE LOCATION AND DATA



Wilbraunson SE cn.

Ingram Shuff $NE \frac{1}{4} SE \frac{1}{4}$
Sec 23. T9S. R2E.

Brick plant -

NE SE Sec 14 T9S R2E

431
120

311

