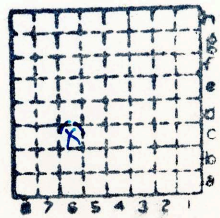




Form 180

528



Sec. 30

T. 9

R. 4

Index No.

mine index 4450





Mine originally operated by: (1)

Date

Original name or number:

Illinois Coal Report

p.

LATER OPERATORS

Date	Operator	Name or No.
2		
3		
4		
5		
6		
7		
8		
9		
10		
11		
12		
13		
14		

\* Also owners

#See ownership sheet

Railroad, Wagon, Idle, Abandoned **Strip**

IDENTIFICATION

County No. 528

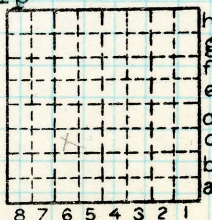
Coal No.

6

Quad. Marion

Part

County Williams on



Sec. 30

T. 9 N. S.

R. 4 E. W.

Index No.

0830 c6

COAL MINE OPERATOR



LOCATION AND ELEVATION

Location: side R. R.  
 side R. R.  
 side Highway No.

on top. map Location sheet

Elevation: Method, 1. Est. ( ) \_\_\_\_\_ ft.  
 2. Inst. (kind **B**) **556** ft. *550 HL*

By \_\_\_\_\_ Data sheet

DEPTH

Authority \_\_\_\_\_ To coal \_\_\_\_\_ ft.  
 Authority \_\_\_\_\_ Rail to rail \_\_\_\_\_ ft.  
 Top of coal above rail. (Est. Rule) \_\_\_\_\_ ft.  
 \_\_\_\_\_ To coal \_\_\_\_\_ ft.

ALTITUDE OF TOP OF COAL

By estimated data \_\_\_\_\_  
 By instrumental data \_\_\_\_\_

**556** *550 HL* ft.

Thickness \_\_\_\_\_  
 Max. in. Min. in. Aver. **72** in.

GEOLOGICAL DATA

Mine notes, date \_\_\_\_\_  
 \_\_\_\_\_  
 \_\_\_\_\_  
 \_\_\_\_\_  
 \_\_\_\_\_

Coop No. \_\_\_\_\_ Pyr. inv. \_\_\_\_\_ Coal Ash inv. \_\_\_\_\_

CHEMICAL DATA

Analyses Face	U. I.	B. M.	Others
Car	U. I.	B. M.	Others
Org. Sulf	U. I.	B. M.	Others
Ash fusion	U. I.	B. M.	Others
Ash anal.	U. I.	B. M.	Others
	U. I.	B. M.	Others

Classification

Misc. tests: Coking. \_\_\_\_\_ Cleaning \_\_\_\_\_ Boiler \_\_\_\_\_

Published descriptions:—

Railroad, Wagon, Idle, Abandoned **Strip**

IDENTIFICATION

County No. **528**

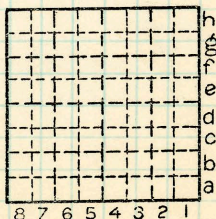
Coal No. \_\_\_\_\_

**6**

Part

Quad. **Marion**

County **Williamson**



Sec. **30**

T. **9** N. S.

R. **4** E. W.

Index No. **0830 c6**

COAL MINE LOCATION AND DATA