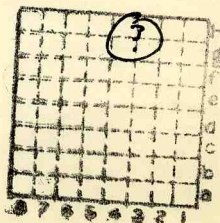




Form 180

NO. 6 COAL ACCORDING
TO CIRCULAR MAPS

FULWILER CC



Sec. 16

T. 31 N.

R. 3 E.

Index No.

✓ Mine Index 2589



Mine originally operated by: (1)

FULWILER COAL CO.
STREATOR

Date 1927.

Original name or number:
Illinois Coal Report _____ p. _____

LATER OPERATORS

Date	Operator	Name or No.
2		J.C. Quade
3		
4		
5		
6		
7		
8		
9		
10		
11		
12		
13		
14		

* Also owners # See ownership sheet

Railroad, Wagon, Idle, Abandoned

IDENTIFICATION

County No.

Coal No.

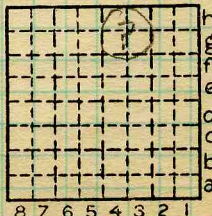
Quad.

80

Part 5

County

LASALLE



NEW YORK
 Sec. 16
 T. 31 N.
 R. 3 E.
 Index No. 2816

COAL MINE OPERATOR



ILLINOIS GEOLOGICAL SURVEY, URBANA

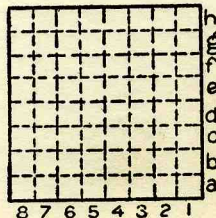
From: Coal Report, 1894, p. 4

Ventilation. - "The Star Coal Company will sink another air-shaft at the face of its No. 2 workings at Kangley, which will greatly improve the quality and quantity of the air-current."

By..... Date.....

Quad..... Part.....

County **LaSalle**.....



Sec. 16	
T. 31	N. S.
R. 6	E. W.