



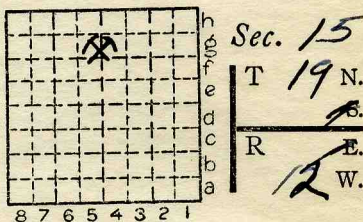
Location and Elevation Data

Location: Exact Approximate
(Approximate only if no trace of record of original exists)
Location by ABD Mines Book
Date Notebook No. Page
Looseleaf ref.
Map files No.

Description of Location

Position in sec., 1/4 sec., 40 acres

feet from North line
feet from East line
feet from South line
feet from West line



Other description:

Farm No.
Company Mary Kistler
No.
County No. 625

Elevation ft.

By

Method: Level, transit, alidade, hand level

Elevation of

Height of point above ground

Date Notebook P.

Looseleaf ref.

Map files No.

Description of item: (drill hole, mine, etc.) NOT USED

County VERMILION Quadrangle 149 Index No. 185 GA



Mine originally operated by: (1)

Mary Kistler

Date

Original name or number:

Illinois Coal Report

p.

LATER OPERATORS

Date	Operator	Name or No.
2		
3		
4		
5		
6		
7		
8		
9		
10		
11		
12		
13		
14		

* Also owners

#See ownership sheet

Railroad, Wagon, Idle, Abandoned

LOCAL MINE IDENTIFICATION

County No.

Coal No.

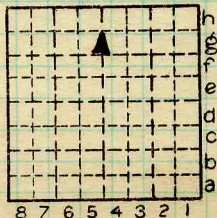


Part

Quad.

County

VERMILION



Sec. 15

T. 19 N. E.

R. 12 W. E.

Index No.

COAL MINE OPERATOR

COUNTY 181569