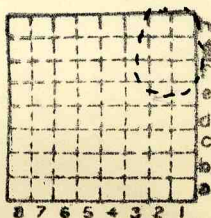




Form 180

Jno. McCLEARNON
(HUGHES-M'LARN)



326. 16
T. 33
R. 1
Index No.

✓ misc index 2669



Mine originally operated by: (1)

HUGHES Mc LARN
KANGLEY

Date 1910.

Original name or number:

Illinois Coal Report _____ p.

LATER OPERATORS

Date Operator Name or No.

2 1911 Ab'd'd J C Quade

3 No trace of mine. If it is near
4 Kangley (Streator Area) it is 31 N 3E
5 Sec 16.

Location?

* Also owners # See ownership sheet

Railroad, Wagon, Idle, Abandoned

IDENTIFICATION

County No.

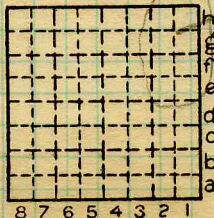
Coal No.

Quad. 62

Part 8

County

LA SALLE



Sec. 16
T. 33 N.
R. 1 E.
Index No. 1616.

COAL MINE OPERATOR