

2407



Form 180 Blue

*Faint handwritten text, possibly "Bunting Bros. No. 1"*

*Bunting Bros. No. 1*

h	.	.	.	.	.	.	.	.	.
g	.	.	.	.	.	.	.	.	.
r	.	.	.	.	.	.	.	.	.
e	.	.	.	.	.	.	.	.	.
d	.	.	.	.	.	.	.	.	.
c	.	.	.	.	.	.	.	.	.
b	.	.	.	.	.	.	.	.	.
a	.	.	.	.	.	.	.	.	.

Secs. 33 L4  
 T. 19 N.  
 S.  
 R. 11 W.  
 Index No.

*mine index 3754*



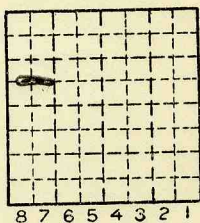
Location and Elevation Data

Location: Exact Approximate  
 (Approximate only if no trace of record of original exists)  
 Location by.....  
 Date..... Notebook No..... Page.....  
 Looseleaf ref.....  
 Map files No.....

Description of Location

Position in sec., 1/4 sec., 40 acres

.....feet from North line  
 .....feet from East line  
 .....feet from South line  
 .....feet from West line



Other description: *operating 1800*  
*Grape Creek* ~~1800~~ *1807 to minor local*  
*in Sec. 32 or 33*  
*Between RR & Hill on N side*  
*of RR. 500' W. of Kedas Pit.*  
*Approx. 1000' long very narrow.*

Farm.....  
 No.....  
 Company *Bunting Bros.*

No. *F1*  
 County No.....

Elevation.....ft.

By.....

Method: Level, transit, alidade, hand level

Elevation of.....

Height of point above ground.....

Date..... Notebook..... P.....

Looseleaf ref.....

Map files No.....

Description of item: (drill hole, mine, etc.) *Strip mine*

County *Vermilion* Quadrangle *149* Index No. *1732, L4*





Mine originally operated by: (1)

Date

BUNTING BROS.

ANTE 1900

1894

Original name or number: No. 1.

Illinois Coal Report p.

LATER OPERATORS

Date

Operator

Name or No.

2	1904	Bunting Bros, A	No. 1, Bunting
3			

4

5

6

7

8

9

10

11

12

13

14

\*Also owners

#See ownership sheet

Railroad, Wagon, Strip, Idle, Abandoned

STRIP MINE

IDENTIFICATION

County No. \_\_\_\_\_

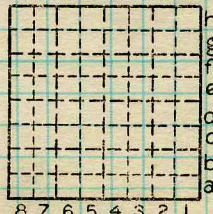
Coal No. \_\_\_\_\_

Coal Report No. \_\_\_\_\_

6

Quad. DANVILLE

County VERMILION



Sec. 33

T. 19 N. 7

R. 11 W. 7

Index No.

1733 LA

COAL MINE OPERATOR





( Sheets ) COAL PRODUCTION ( Sheet )

Period						Tons		
Mo.	Day	Year	Mo.	Day	Year			
					1900	6	600	
					1901			
					1902	7	178	MINOR PROD.
					1903	10	354	
					1904	11	897	
					1905	8	359	
					1906	24	590	ABD
					1907			

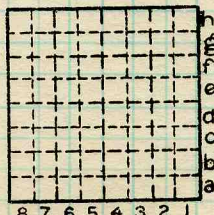
SUMMARIES

No.	to	No.			
1900		1906			68978

Railroad, Wagon, Strip, Idle, Abandoned STRIPMINE

IDENTIFICATION

County No. \_\_\_\_\_ Coal No. \_\_\_\_\_  
 Coal Report No. \_\_\_\_\_  6  
 Quad. DANVILLE  
 County VERMILION



Sec. 33

T. 19 N.  
 R. 11 W.  
 Index No. 1733LA

