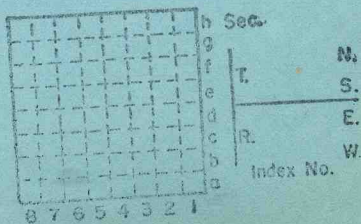


Walnut Grove Mining
Co. Inc. #1

Mine Index
Saline Co.



(Sheets) **COAL PRODUCTION** (Sheet)

Period				Tons
Mo.	Day	Year	Mo. Day Year	
			1967	1,470

SUMMARIES

No. to No.

Railroad, Wagon, Strip, Idle, Abandoned

IDENTIFICATION

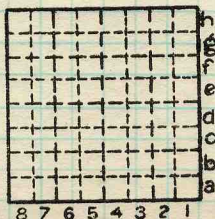
County No. _____

Coal No.

Coal Report No. _____

Quad.

County *Saline*



Sec.

T. N.
S. S.
E. E.
R. W.
W. W.
Index No.

COAL MINE-PRODUCTION

ILLINOIS GEOLOGICAL SURVEY, URBANA

*Abandoned
6/68*

~~Walnut Grove Mng. Co. #1~~

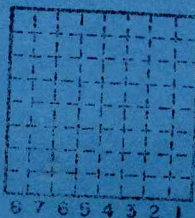
West Star Coal Co, Inc.

#1

S-54

Mine Index

Saline County



Sec.
T.
R.
Index No.



Period						Tons		
Mo.	Day	Year	Mo.	Day	Year			
					1966		1	470
					1967		25	338
					1968		30	364

SUMMARIES

No. to No.

Railroad, Wagon, Strip, Idle, Abandoned

6/68

IDENTIFICATION

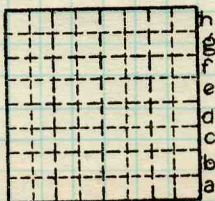
County No. _____

Coal No.

Coal Report No. S-54

Quad.

County Saline



Sec.

T. N.
R. S.
W. E.
Index No.

COAL MINE—PRODUCTION

ILLINOIS GEOLOGICAL SURVEY, URBANA

