

FIELD NOTES

Illinois State Geological Survey

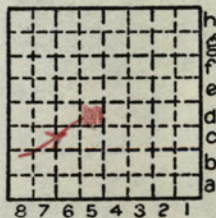
(33-1S-7W-5d) and (32-1S-7W-12ab)

February 3, 1959.

Peabody Coal Company - high wall exposures.

- 15'± Glacial drift - not studied
- 7'± Interval - partially covered. Appears to be mainly composed of medium grained gray shale with an 18"-2' sandstone (?) zone near base. (Not accessible)
- 1'± Limestone or claystone - not accessible.
- 2'± Shale - gray to medium dark gray with greenish cast
- 1'± Limestone (Cutler) - brownish gray, very hard, argillaceous, dense
- 3'± Shale - greenish gray, appears to be fissile but plastic when wet, in beds up to 6" thick interbedded with very argillaceous nodular limestone bands up to 1 1/2" thick which become thicker and more abundant toward top. Very irregular top.
- 2'3"± Limestone (Bankston Fork) - gray to brownish gray, dense to finely crystalline, somewhat argillaceous in part, thick bedded to massive.
- 3'± Shale - gray to dark gray with slight greenish cast in part, containing a zone of flattened calcareous nodules up to 1" thick 5" from top.
- 4'0" Shale - light to medium gray, rather poorly bedded in lower part; better bedded and dark gray to black toward top.
- 2'0" Limestone (Jamestown) - brownish gray, massive, very dense and hard, somewhat argillaceous

(Continued next page)

By D.L.Reinertsen and J.Stahlman Date 1959Quadrangle New AthensCounty St. Clair Sec. 33 T. 1S R. 7W

FIELD NOTES
Illinois State Geological Survey

p. 2.
(33-1S-7W-5d) and (32-1S-7W-12ab) cont.

- 0'7" Shale - dark gray to black, fairly well bedded, somewhat slaty in part with numerous flattened oval ironstone concretions
- 0'3" Coal (Jamestown) - normally bright banded with some calcite on vertical facings, fairly hard with considerable oxidation on surface
- 0'2" Clay-shale - dark gray to black, soft, crumbly, weathered, with semblance of bedding downward.
- 0'11" Limestone (Herrin) - medium to dark gray, fairly hard, very fossiliferous, very silty and argillaceous. Grades downward into:
- 1'8"-6'+ Limestone - light to medium gray, massive to thick bedded, hard, fossiliferous. Thickness increases toward the east of the pit
- 6"-7' Shale - black to dark gray, slaty and hard in part, containing dense, hard, dark gray to black calcareous concretions up to 10" thick and 2' across. (Not too well exposed).
- 6'+ Coal (Herrin No. 6) - normally bright banded. Underclay.

By D.L. Reinertsen and J. Stahlman Date 1959

Quadrangle New Athens

County St. Clair Sec. 33 T. 1S R. 7W

