



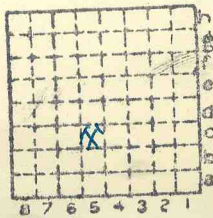
Form 180

Meek Mine

249

R -F

HERRIN



Sec. 36
 T. 3^N S.
 R. 6^E W.
 Index No.

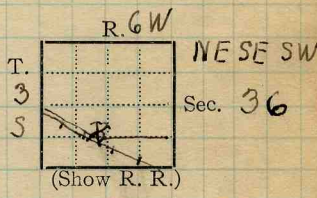
Mine Index
 ✓ MI 205



Town, *Marissa* *823* Surface alt., *517 (Shaw)* ft.
 Local Authority, *183* Depth to coal, *183* ft.
340 Alt. top coal, ~~*334-340*~~ ft.
 Level: Auth., *Mine Notes* Thickness: Av. *84* in.
Skinner NB 526 p. 55 Max. in., Min. in.

Method, *Planetable*
III. Pet 18 No 66

R. R., *E. H. Cent.*



Location: authority, *Cady's map of mines near Marissa*

Operator _____ Mine Name or No. _____

19 *16* *Egyptian Coal & Mining Co. Meek No. 1*
502 Oriol Bldg. St. Louis
 Successor to *T. M. Meek Coal Co.*

Date _____
 Succeeded by _____
 Date _____
 Succeeded by _____
 Date _____

PRODUCTION.

							U. S. No.
19							
<i>11/18/26</i>	<i>Marissa News</i>	<i>Meek mine opened</i>	<i>1/15/26</i>				<i>90</i>
<i>1927</i>	<i>89</i>	<i>396</i>					
<i>1928</i>							
				<i>55</i>			<i>1930 # 41</i>

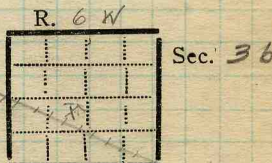
Geol. Notes? *Yes* Coop. No. _____ Coal secs? *No*
 Analyses No. *12556-7-8* *BEN'L COAL TREAT*
 Examined by _____ Ref. *2199*
 Coal bed name: Local *SHIPPING MINE* Survey No. *6*
 County *St. Clair* Index No. *1736.34*
 K.—~~ACTIVE~~ SHIPPING ~~COAL~~ COAL MINE. *sale since 1927*



Town, *Marissa* Surface alt., *525* ft.
 Local Authority, *McKearn (Supt)* Depth to coal, *200* ft.
 Alt. top coal, *325* ft.
 Level: Auth., Thickness: Av. *78* in.
 Max. *84* in., Min. *60* in.

Method, *Barometer.*

R. R., *Illinois Central (Cairo & St. Louis)* T.



Location: authority,

(Show R. R.)

Operator

Mine Name or No.

19 *21* *Egyptian Coal & Mining Co.* *Meek*

Successor to

Date

Succeeded by

Date

Succeeded by

Date

PRODUCTION.

								U. S. No.
19								<i>L</i>

Geol. Notes? *YES* Coop. No. Coal secs? *3*
 Analyses No. *249*
 Examined by *Natzoband* Ref. *Loose leaf*

Coal bed name: Local **SHIPPING MINE** Survey No. *#6*
 County *St. Clair* Index No. *1736-34*

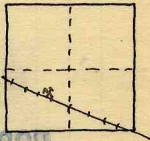
K.—ACTIVE SHIPPING OR LOCAL COAL MINE.



COAL MINE NOTES.

1736

COUNTY *St Clair.* TOWN _____ MAP No. *2226*
 T. *3S.* R. *6W* S. *36 N.E. 1/4 SW 1/4*
 OPERATOR (*T.M. Meek Coal Co*) *Egyptian Coal + Mfg. Co.*
 OFFICE *Marissa.*
 MINE *Meek*
 TIPPLE *Wood.*
 ENGINES _____
 BOILERS _____
 DRUM _____
 SHAFT _____ CAGE _____
 HAULAGE *Mules.*
 CARS *Wood. 1 1/2 tons.*
 VENTILATION _____



GENUINE
COUNTY

DRAINAGE _____
 SPRINKLING _____
 WORKING SYSTEM *Room & Pillar*
 MINING METHODS *Hand mined. Shot off solid.*

SIZE OF ENTRIES—MAIN	CROSS	ROOM	NECK
SIZE OF PILLARS—MAIN	CROSS	ROOM	
SHAFT	CHAIN	BARRIER	
AMOUNT OF TIMBERING		SIZE	
PROPORTION OF COAL UTILIZED			
AMOUNT AND CHARACTER OF WASTE			
ACREAGE OF COAL MINED			
ACREAGE OF COAL REMAINING			
PROPORTION OF MINE RUN AND SCREENED COAL			
METHOD OF SIZING			RESCREENED
SIZES			
PER CENT			
PROPORTION AND SIZE OF WASHED COAL			
DAILY OUTPUT			
UTILIZATION			
MARKETS			
FREIGHT RATES			
SELLING PRICES AT MINE			
COAL LAND OWNED	LEASED		HELD IN FEE
COST OF LAND OWNED	LEASED		HELD IN FEE
ADDITIONAL NOTES			

GEN'L COAL REPT. *249*

2226

1736



COAL MINE NOTES.
CONTINUED.

1736

OPERATOR *(T.M. Meek Coal Co.)* Egyptian M_g. Co. MINE *Meek*
ENTRANCE *Shaf.* NAME OF COAL BED #*6.*
ELEVATION *517 Shaw* THICKNESS OF COAL
DEPTH TO FLOOR *190?* MAX. MIN. AV.
ALTITUDE OF COAL
LOCATION OF SECTION

7483 Ralfe Wap-
COUNCIL

No.	SECTION.	In.
1	<i>Shaws elev</i>	
2	<i>seems O.K.</i>	
3		
4		
5		
6		
7		
8		
9		
10		
11		
12		
	<i>Tape</i>	<i>Total</i>

517
183
334

SAMPLE No.
CAN No.
CONDITION
GROSS WEIGHT
TIME EXPOSED
NOT SHIPPED
NOT INCLUDED

SECTION	Feet

PHYSICAL PROPERTIES BY NUMBERS

ROOF
FLOOR
DIP
FAULTS, ETC.
GAS

COLLECTOR *Udden*

REFERENCE *M.B. 138 P. 46*

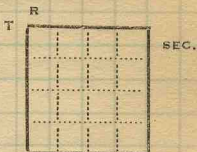
*2*12.16*
DATE

1736



TOWN _____ TOWNSHIP _____
 COMPANY _____
 FARM _____
 AUTHORITY _____
 ELEVATION _____ HOLE NO. _____
 COLLECTOR *M. Marston* DATE DRILLED _____

MAP NO.



No.	STRATA	THICKNESS		DEPTH	
		FEET	IN.	FEET	IN.
	<p><i>Meek mine</i></p> <p><i>210 ft deep in shaft.</i></p> <p><i>Is about level for 1/2 mile S.</i></p> <p><i>N is a good raise to 1500' N and then</i> <i>goes back down to N.</i></p> <p><i>W is a sag toward white oak, and then</i> <i>arise.</i></p> <p><i>302 Otisole Bldg.</i></p> <p><i>Have two mines between Tilden</i> <i>and Marissa.</i></p>				

County

Index No.



Operator, *Egyptian C. & Min. Co.* Date *May 7, 1921*
 Mine, *Meek* Sec. *36* T. *35* R. *6 W.*
 Located, *3.5 E* miles from *Marissa*
 Location in mine, *4 W. entry S.*

GRAPHIC SECTION		DESCRIPTION OF SECTION (AT POINT SAMPLED)		
In.	No.	No.	(Note character and thickness of roof)	Inches
			<i>Slate Roof</i>	
	<i>1</i>		<i>Coal</i>	<i>8</i>
	<i>2</i>		<i>Charcoal</i>	<i>5 1/4</i>
	<i>3</i>		<i>Coal</i>	<i>5 1/4</i>
	<i>4</i>		<i>Pyrite</i>	<i>4</i>
	<i>5</i>		<i>Coal</i>	<i>5</i>
	<i>6</i>		<i>Ch'coal & pyrite</i>	<i>1 3/4</i>
	<i>7</i>		<i>Coal</i>	<i>6 3/4</i>
	<i>8</i>		<i>Ch'coal</i>	<i>1 1/4</i>
	<i>9</i>		<i>Coal</i>	<i>1 5/8</i>
	<i>10</i>		<i>Charcoal</i>	<i>4 1/2</i>
	<i>11</i>		<i>Coal</i>	<i>5</i>
	<i>12</i>		<i>Pyrite & Charcoal</i>	<i>1</i>
	<i>13</i>		<i>Coal</i>	<i>13</i>
	<i>14</i>		<i>Pyrite</i>	<i>1/2</i>
	<i>15</i>		<i>Coal</i>	<i>4 1/2</i>
	<i>16</i>		<i>Slate - Blue Band</i>	<i>3 1/4</i>
	<i>17</i>		<i>Coal</i>	<i>1 1/2</i>
			<i>Fire clay floor</i>	
			(Note character and thickness of floor)	
			Total thickness of coal. <i>82"</i>	
Condition, <i>As mined</i>		Time,	hr. <i>40</i> min.	
Wt. Gross, <i>20</i> lbs.		Net,	lbs.	
What Nos. shipped by Co.?				
<i>Sack 1</i>				
Excluded from sample: No. <i>4, 6, 12, 14, 16</i>				
Sample represents		<i>78 1/4</i> in.	tons.	
Impurities? How do they occur? <i>Bedded</i>				

Sample No. _____ Can No. *U-21-1* Lab. No. *12556*
 Collector, *Wilson* Coal: Survey No. *6*
 Mine, *Meek* Co. *St. Clair* Index No. *1736.34*
R.—COAL SAMPLE SHEET.



Operator, *Egyptian C. & M. Co.* Date *May 7, 1921*
 Mine, *Meek* Sec. *36* T. *35* R. *6W.*
 Located, *35.5* miles from *Marissa*
 Location in mine, *Main S. Entry.*

GRAPHIC SECTION		DESCRIPTION OF SECTION (AT POINT SAMPLED)		
In.	No.	No.	(Note character and thickness of roof)	Inches
			<i>Slate Roof</i>	
	<i>1</i>		<i>Coal</i>	<i>12</i>
	<i>2</i>		<i>Pyrite</i>	<i>1/2 - 3/4</i>
	<i>3</i>		<i>Coal</i>	<i>1/4</i>
	<i>4</i>		<i>Clay Mixture</i>	<i>1/2</i>
	<i>5</i>		<i>Coal</i>	<i>1/2</i>
	<i>6</i>		<i>Pyrite</i>	<i>1/2</i>
	<i>7</i>		<i>Coal</i>	<i>6 1/2</i>
	<i>8</i>		<i>Sh. & Pyrite</i>	<i>1 1/2</i>
	<i>9</i>		<i>Coal</i>	<i>16 1/4</i>
	<i>10</i>		<i>Sh. Blue Band</i>	<i>3 1/4</i>
	<i>11</i>		<i>Coal</i>	<i>10</i>
			<i>Fireclay</i>	
			<i>Sect No. 2</i>	
(Note character and thickness of floor)				
Total thickness of coal. <i>76"</i>				

Condition, *As mined.* Time, *hr. 35 min.*
 Wt. Gross, *70* lbs. Net, *lbs.*
 What Nos. shipped by Co.?

Excluded from sample: No. *2, 4, 6, 8, 10*
 Sample represents *73 3/8* in. tons.
 Impurities? How do they occur? *Pyrite & Sh*
Bedded & in small lenses.

Sample No. _____ Can No. *11-21-2* Lab. No. *12557*
 Collector, *Wilson* Coal: Survey No. *6*
 Mine, *Meek* Co. *St. Clair* Index No. *1736-34*
 R.—COAL SAMPLE SHEET.



Operator, *Egyptian C. & Min. Co.* Date *May 7 21*
 Mine, *Meek* Sec. *36* T. *39* R. *60W.*
 Located, *35 E.* miles from *Marissa*
 Location in mine, *9 E. N.*

GRAPHIC SECTION		DESCRIPTION OF SECTION (AT POINT SAMPLED)		
In.	No.	No.	(Note character and thickness of roof)	Inches
			<i>Slate Roof</i>	
	<i>1</i>		<i>Coal</i>	<i>1 1/2</i>
	<i>2</i>		<i>Pyrite & Sh.</i>	<i>1 1/2</i>
	<i>3</i>		<i>Coal</i>	<i>1 1/2</i>
	<i>4</i>		<i>Pyrite</i>	<i>1 1/2</i>
	<i>5</i>		<i>Coal</i>	<i>2 1/2</i>
	<i>6</i>		<i>Pyrite</i>	<i>1 1/2</i>
	<i>7</i>		<i>Coal</i>	<i>1 1/2</i>
	<i>8</i>		<i>Sh. - Blue Band</i>	<i>1 1/2</i>
	<i>9</i>		<i>Coal</i>	<i>1 1/2</i>
			<i>Fire clay</i>	<i>1 1/2</i>
			<i>Sack 5</i>	
			(Note character and thickness of floor)	
			Total thickness of coal. <i>77</i>	
Condition, <i>As mined</i>		Time,	<i>hr. 40 min.</i>	
Wt. Gross, <i>25</i> lbs.		Net,	lbs.	
What Nos. shipped by Co.?				
Excluded from sample: No. <i>2, 4, 6, 8</i>				
Sample represents <i>74 1/2</i> in. tons.				
Impurities? How do they occur?				

Sample No. _____ Can No. *14-21-3* Lab. No. *12558*
 Collector, *Wilson* Coal: Survey No. *6*
 Mine, *Meek* Co. *St. Clair* Index No. *1736.34*



259693

INDEX

(36713-500-7-20)

- G3 The slate above the coal draws or comes down with the coal only in widely scattered parts of the mine. In most places it can be held & makes a fair roof.
- L1 It was reported by one of the miners that there was rock bottom in some places. He could not give any information as to the location of the points where this occurred.

:

Collector *Natzband & Wilson*Index No. *1736.34*X- / EXTRA NO. *1*County *St. Clair*



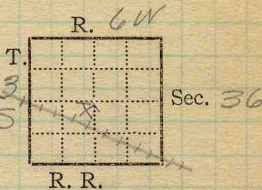
Mine Name or No.,

Meek

3 mile *S.E.* from *Marissa*

Operator, 1911

Egyptian Coal & Mining Co



Operator, 191

Entrance, *shaft*

Elev.,

523.4 Skimmer

525

ft.

above,

sea level

below,

Depth to ~~bottom~~ coal, *200*

200

ft.

Alt. *325*

325

SURFACE DATA.

A. Topography,

Rolling

See

B. Surficial materials.

(1) Character,

Till

(2) Thickness,

27'

(3) Effect on mining and shaft-sinking, of former

drainage lines, underground water strata, etc. *No information.*

C. Outcrops,

(1) Character,

See

(2) Structure,

See

(3) Fossil horizons,

See

Collection No.,

See

(4) Evidences of subsidence,

See

D. Note collection of mine maps, drill records and shaft logs.

See drill record sheet,

E. Notes on surrounding area,

GEN'L COAL REPT.

See

249

Coal bed name: Local,

Survey No. *#6*



Collector, *Natzband & Wilson*

Mine, *Meek*

Co. *St. Clair*

Index No. *1736-34*



F. Thickness of rock above bed worked, *173'*
 (1) Important variations, See

G. Note presence of strata having important effect on mining, See
 (1) Position, *Above coal*
 (2) Character, *Draw slate*
 (3) Persistence, *Not very persistent.*
 (4) Other workable coal beds, See *x 1.*

H. Cap rock, *Limestone*
 (1) Thickness, *12'*
 (2) Height above coal, *1/2" to 3'*
 See

I. Immediate roof, *Slate*
 (1) Thickness, *1/2" to 3'* (2) Contact with coal, *Regular*
 (3) Horizontal variation, *Thickness 1/2" to 3'*
 See

J. Draw slate. (1) Thickness, *3ft* (2) Contacts *clean*
 (3) Persistence, *Comes down with coal only in parts of the mine.*

K. Coal bed: Max. *84* Min. *60* Av. *78* inches
 (1) Benches, *5*
 (a) Position, *Top, 9", drift, block to bottom*
 (b) Persistence, *All over mine.*
 See

(2) Bedded impurities, kind, position in benches, persistence, ease of separation. *Blue band, clay & charcoal.*
Waste 2" of coal on either side of blue band.
 See

(3) Irregularities in continuity of bed (due to deposition, erosion, or movement), *Minor slips cause bad roof in places*
 (a) Effect on mining, See

SECTION				
Ft.	In.	Name		Sym.
27		Till		
173				
12		Limestone		
3		Blacksh		
66		Coal		



K. (5) Physical character of coal in benches,

(a) Relative hardness, *Bottom coal hardest*(b) Lustre, *Most bright, a little dull.*(c) Fracture, *Hackly*(d) Texture, *Laminated*

See

(6) Impurities in coal, other than bedded, *Pyrite*(a) Kind, *Lenses + vein fillings*(b) Position and persistence, *Usually any place above bottom coal*(c) Rejected, *Only large lenses* Ease of separation, *Sticks.*

See

L. Floor: (1) Material, *Fire clay* *Rock bottom in places*

(2) Thickness,

(3) Variation,

(4) Note character, condition, tendency to heave, relation to undercutting commercial value. *Good bottom.**Used to undercut upon.*

See X I

(5) Clay sample No.

Location,

M. Stratigraphy,

(1) Fossiliferous horizons underground,

Collection No.

Location,

N. Notes on effect of deep drilling in coal mine areas.

See

Collector, *Net-aband & Wilson*Coal: Survey No. #6 Mine, *Meek*Co. *St. Clair*Index No. *1736-34*