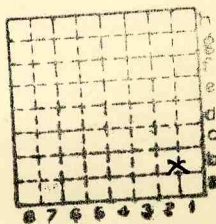




Form 180

JOHN PETROTTI



Sec. 22

T. 31 ^{N.}_S

R. 3 ^{E.}_{W.}

Index No.

✓ Mine index 2594



Mine originally operated by: (1)

JOHN PETROTTI
KANGLEY

Date 1915.

Original name or number:

Illinois Coal Report p.

LATER OPERATORS

Date	Operator	Name or No.
2	1927 Ab'd'd.	J.C. Quade
3		
4		
5		
6		
7		
8		
9		
10		
11		
12		
13		
14		

* Also owners

See ownership sheet

Railroad, Wagon, Idle, Abandoned

IDENTIFICATION

County No.

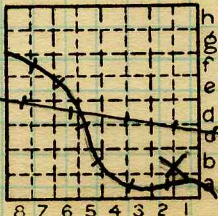
Coal No.

Quad. 80

Part 5

County

LA SALLE



Sec. 22

T. 31 N.

R. 3 E.

Index No.

2822

COAL MINE OPERATOR