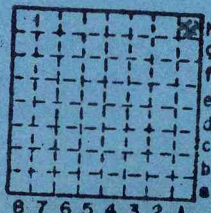


LIBRARY

IS65 Index No. 4136

Liberty C.C.

550



h	Sec.	31
g	T	9
f		
e	R.	4
d	Index No.	0831 41
c		
b	E.	
a	W.	

0831 41



Mine originally operated by: (1)

Date
1935?

Liberty C. C.

Original name or number:

Illinois Coal Report _____ p. _____

LATER OPERATORS

Date

Operator

Name or No.

2 *Made out from loc. sheet &*
M. B. C. C. Loc. sheet information is from
 3 the Dept. of Mines & Minerals with no date. Coal
 Reports have a Liberty CC in 1935 & 1936, so it
 4 is possibly the same as the location sheet re-
 ference.

5
6
7
8
9
10
11
12
13
14

*Also owners

#See ownership sheet

Railroad, Wagon, Strip, Idle, Abandoned 1936

Local

IDENTIFICATION

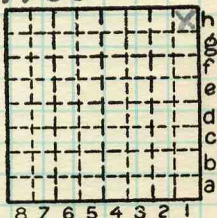
County No. 550

Coal No.

Coal Report No. _____

Quad.

County *Williamson*



Sec. 31

T.	<u>9</u>	N.
R.	<u>4</u>	E.
		W.

Index No.

0831 H1

COAL MINE OPERATOR

